

# Xeni Gwet'in First Nation Government PICFI Commercial Fishery



TSILHQOT'IN  
PEOPLE OF XENI

# **Best Practices**

## **How Do We Get From Here to There**

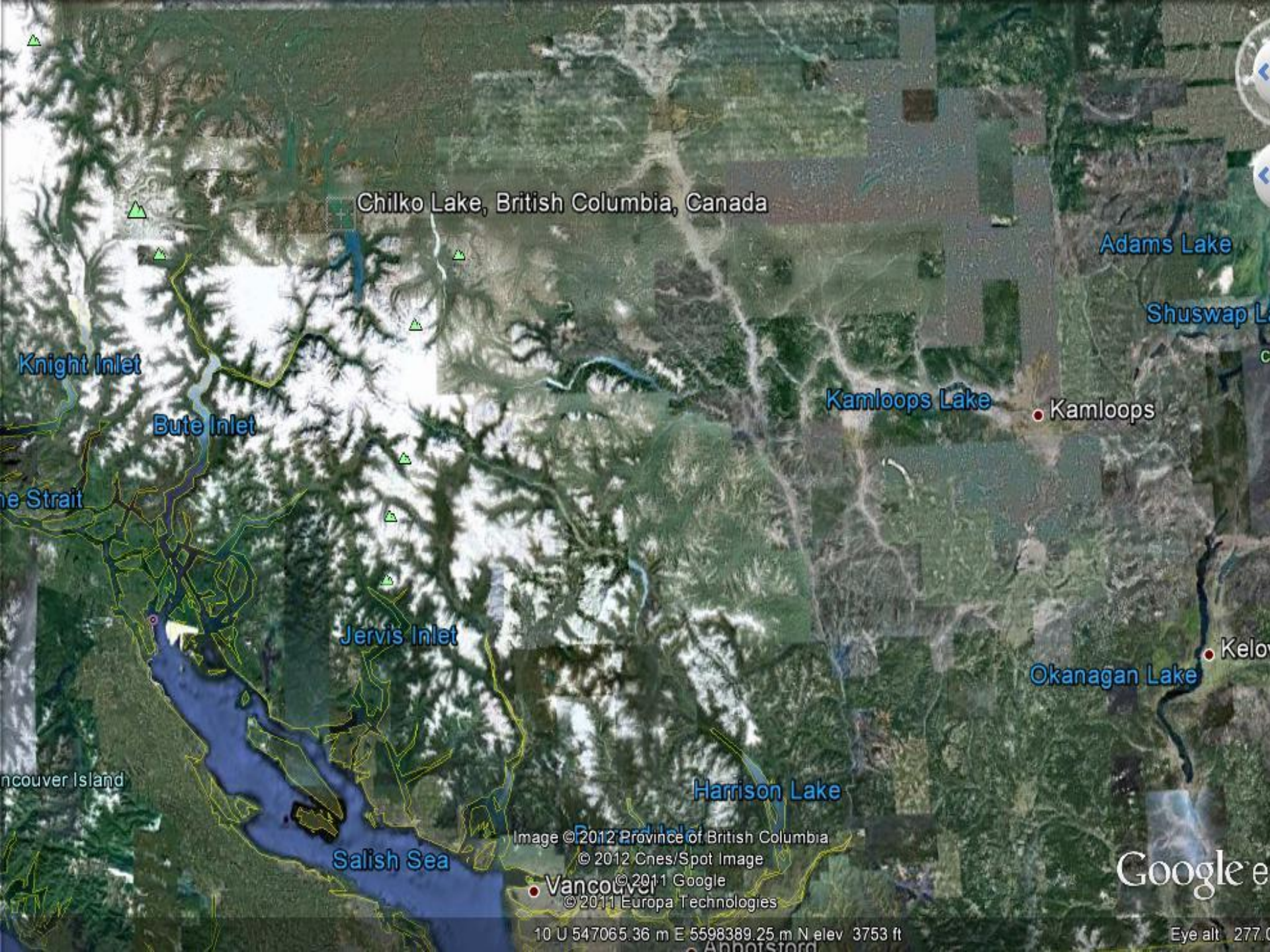
**Overview of the Xeni Gwet'in  
- Their history and PICFI**

**How are we protecting our  
First Nations FSC fishing  
priorities?**

**What have we done to ensure  
that these fisheries are  
viable?**

**What are some of our biggest  
challenges?**





Chilko Lake, British Columbia, Canada

Adams Lake

Shuswap L

Kamloops Lake

Kamloops

Knight Inlet

Bute Inlet

the Strait

Jervis Inlet

Okanagan Lake

Kelowna

Vancouver Island

Harrison Lake

Salish Sea

Image © 2012 Province of British Columbia

© 2012 Cnes/Spot Image

© 2011 Google

© 2011 Europa Technologies

Vancouver

Google e

10 U 547065.36 m E 5598389.25 m N elev 3753 ft

Eye alt 277.0

# Xeni Gwet'in Territory

With Various Administrative Boundaries, Including the Aboriginal Preserve, Declaration Area, Proven Rights & Title Areas, Provincial Parks and Indian Reserves.



## Legend

- Xenigwet'in Aboriginal Preserve
- Xenigwet'in Declaration Area - Aug 1999
- BC Parks
- Proven Territory in Title Area
- Proven Territory in Rights Area
- Indian Reserves

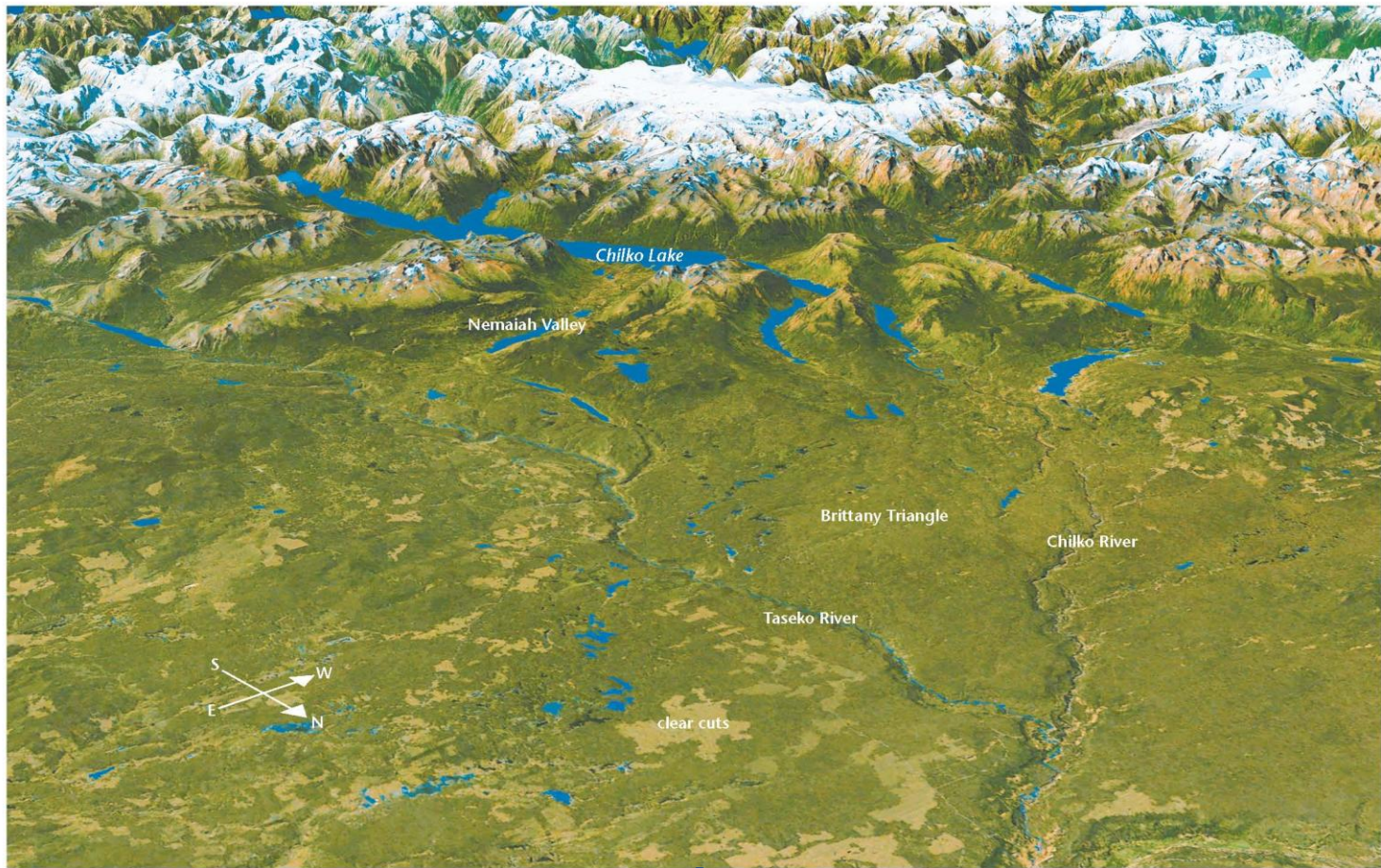
Scale = 1:300,000

The Xenigwet'in Declaration Area is located within the Xenigwet'in Declaration Area, as per section 10.1 of the Xenigwet'in Declaration Area. The Declaration Area is located within the Xenigwet'in Declaration Area. The Declaration Area is located within the Xenigwet'in Declaration Area. The Declaration Area is located within the Xenigwet'in Declaration Area.



# White and Blue Gold of The Chilko River

(Photo from Canadian Geographic)



# What You May or May Not Know About The Xeni Gwet'in

- \* **One of 6 Tsilhqot'in communities**
- \* **The Chilcotin War of 1864**
- \* **The Blockade at Henry's Crossing**
- \* **Tsylos Provincial Park**
- \* **Wild Horse Preserve Declaration**
- \* **Rights and Title Case**
- \* **Quality Waters Management Planning and Capacity Building**
- \* **Fish Lake – Prosperity Mine**
- \* **Ecosystem Based Management Planning**
- \* **Sustainable Tourism Protocol**
- \* **Climate Change Adaptation Plan**



# The Xeni Gwet'in and PICFI

- \* Recommendation of a freshwater fishery provided in a 2006 report
- \* Letter of interest submitted to DFO in Dec 2008
- \* Demonstration fishery in 2010
- \* Demonstration fishery in 2011
- \* Early Stages of a Commercial Fishery Enterprise (CFE)



# Why Fish the Chilko River Sockeye ?

- \* **Since 1952 an average of 1,012,864 Chilko River sockeye are harvested in all fisheries including First Nation (based on data from 1952 – 2008)**
- \* **Total run size during this period has been as high as 4.6 million**





# How Are We Protecting Our First Nations FSC Fishing Priorities?

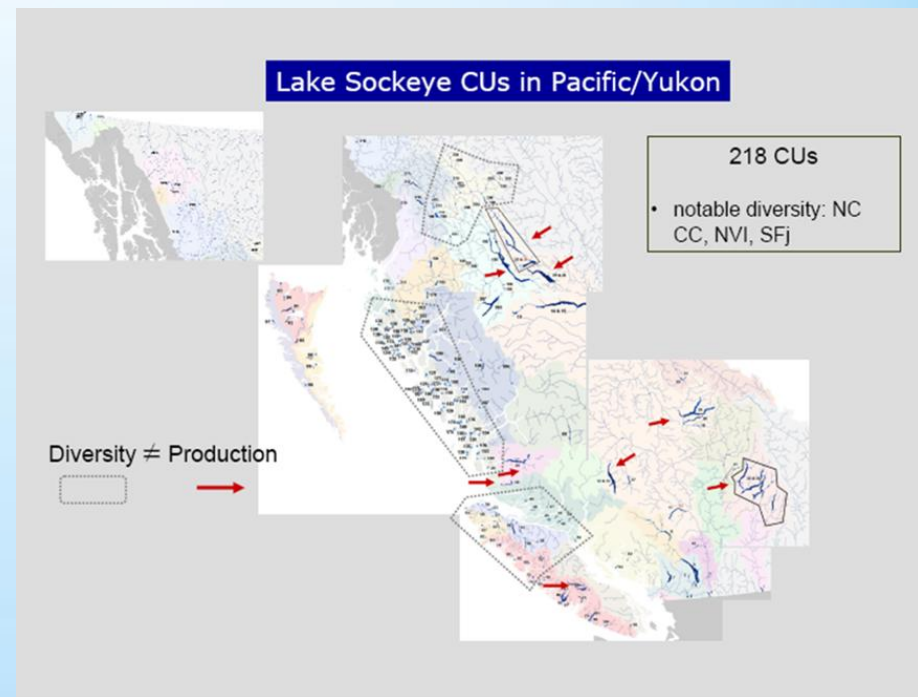
## 1

- \* **There are very important stock management issues related to this fishery that go beyond the much needed FSC fisheries.**
- \* **The Taseko sockeye stock is in crisis and the Quesnel stock is not far behind.**



# Stock Management Issues

- \* Also migrates with the Quesnel sockeye stock which is in trouble
- \* Migrates with the Taseko River sockeye stock which is in real trouble
- \* 40 Taseko sockeye in 2009
- \* Historically as high as 31,667 in 1963 and more recently 11,138 in 1988



# How Are We Protecting Our First Nations FSC Fishing Priorities?

## 2

- \* **Most importantly we were able to utilize two dip-netting locations that are some distance from the traditional sites located at Henry's Crossing.**



# How Are We Protecting Our First Nations FSC Fishing Priorities?

## 3

- \* We were able to undertake seine fishing training at locations that did not impact the FSC fishery.
- \* Coordinated fishery at Lingfield Creek so as not to disrupt the DIDSON counter currently managed by DFO. (Photo from DFO's Chris Narver)



# What have we done to ensure that these fisheries are viable?

## 1

- \* **Through the demonstration fisheries in 2010 and 2011 the Xeni Gwet'in have shown that their small scale selective dip-net fishery does not impact the FSC fishery.**



# What have we done to ensure that these fisheries are viable?

## 2

- \* **In collaboration with the Okanagan Nation Alliance marketing and branding of the Xeni Gwet'in dip-net fishery has had a successful beginning providing fresh product to restaurants.**



# What have we done to ensure that these fisheries are viable?

## 3

- \* **The Xeni Gwet'in recognize that more can be accomplished in collaboration with others and they have entered into the preliminary stages of a UFFCA supported Commercial Fishing Enterprise (CFE).**



# What are some of our biggest challenges?

## 1

- \* **The PICFI process has not provided time to accommodate discussion and meaningful consultation within the Xeni Gwet'in Caretaker Area including the non First Nation residents and businesses.**
- \* **The PICFI program is “sunsetting” after 5 years yet the Xeni Gwet'in feel they are only just beginning.**

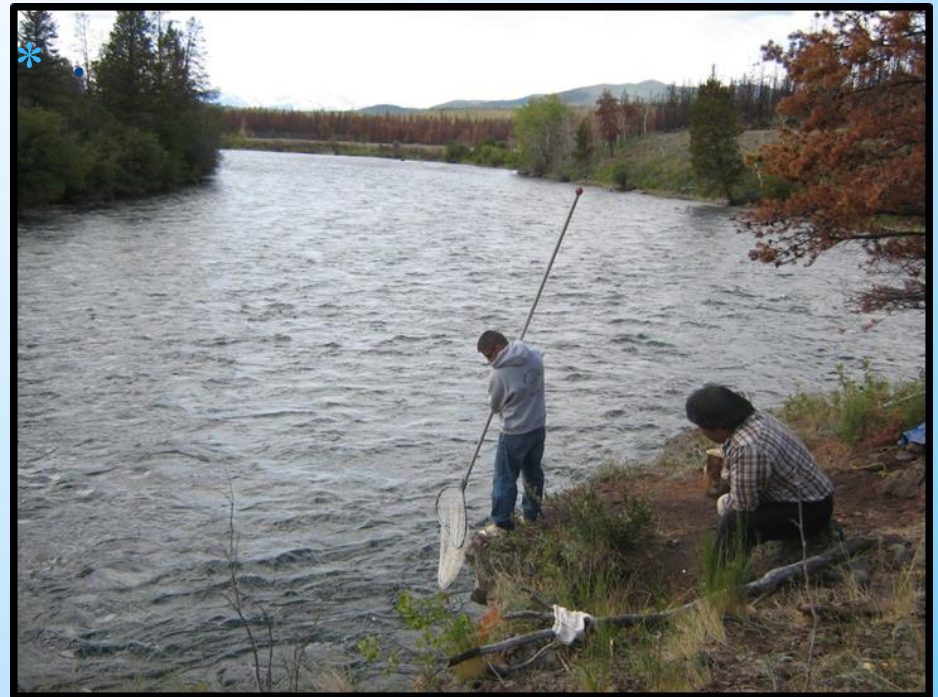




# What are some of our biggest challenges?

## 2

- \* **Locating additional ideal fishing sites**
- \* **More planning time for all aspects of the fishing is needed.**



# What are some of our biggest challenges?

## 3

- \* **The fishery is located a very long way from the nearest processing plant which to date has been the Siska fish plant in the Fraser Canyon....7-8 hours from the fishery in the upper Chilko River.**



# What are some of our biggest challenges?

## 4

- \* **The fresh market in turn for the Xeni Gwet'in has been the Okanagan which once again is a long way from the Upper Chilko River.....through the Siska fish plant.**



# What are some of our biggest challenges?

## 5

- \* **The Xeni Gwet'in have limited opportunity for employment. They envision processing and creating a value added product for the marketplace and not just being fishers and suppliers of whole sockeye.**



# What are some of our biggest challenges?

## 6

- \* **More funding is required for crew support on the river.**
- \* **Currently the crew camps at Henry's Crossing.**
- \* **This was fine for a demonstration fishery but improved facilities and living arrangements will be needed in the future.**



# What are some of our biggest challenges?

7

- \* **Being able to collaborate with DFO's chinook and sockeye programs at the Lingfield Creek location on the Chilko River.**



# What are some of our biggest challenges?

## 8

- \* **The establishment of the CFE is a big challenge as well but should be a rewarding one that offers a chance for collaboration and an organized future for the Xeni Gwet'in small scale commercial fishery.**



# Gratitude

- **The crew**
- **RPBio Paddy Smith**
- **Chief and Council**
- **The Xeni Gwet'in**
- **Pam Quilt and Nancy Opperman**
- **UFFCA**
- **TNG and NSTC**
- **The Warehouse Crew**
- **Siska Plant**
- **Mike McLean**
- **Dave Moore**
- **Charlie Muldon**
- **The ONA Team**
- **DFO/Dale Michie**
- **Others I may have missed**





# Thank you and Questions



TSILHQOT'IN  
PEOPLE OF XENI